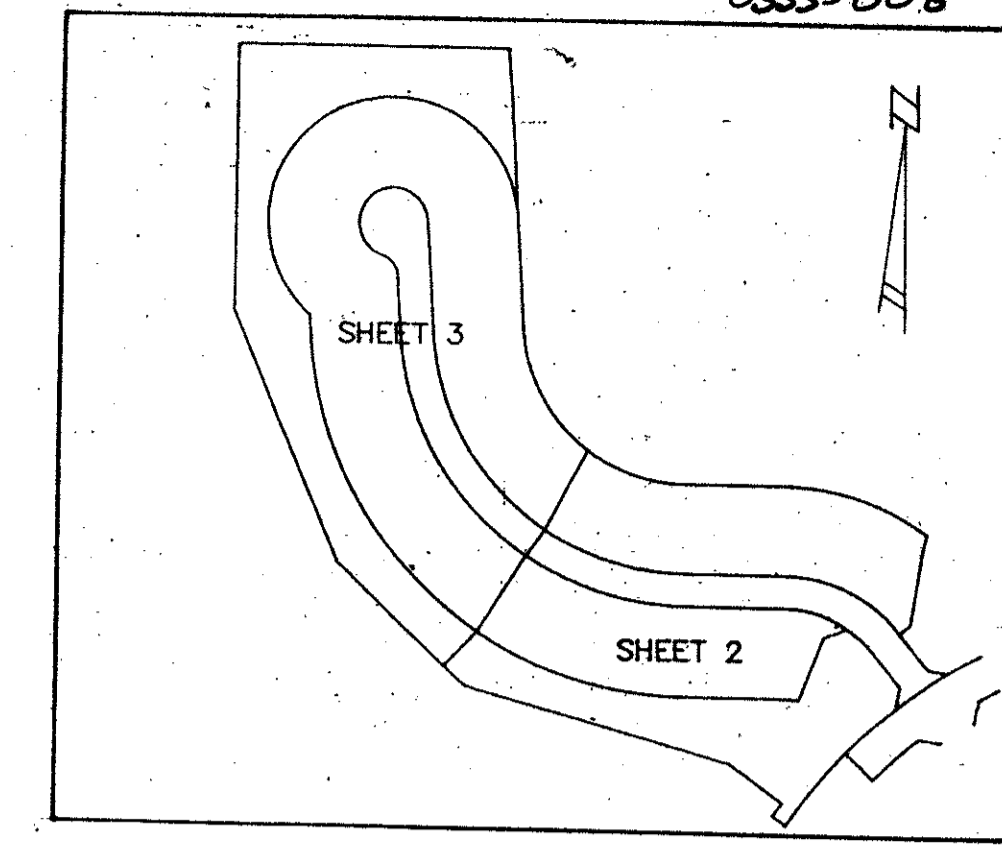


EQUESTRIAN CLUB ESTATES - PLAT NO. 2 OF PALM BEACH POLO AND COUNTRY CLUB WELLINGTON COUNTRYPLACE - P.U.D.

IN PART OF SECTION 20, TOWNSHIP 44 SOUTH, RANGE 41 EAST
PALM BEACH COUNTY, FLORIDA
SHEET 3 OF 3 SHEETS
JUNE 1989

0333-008

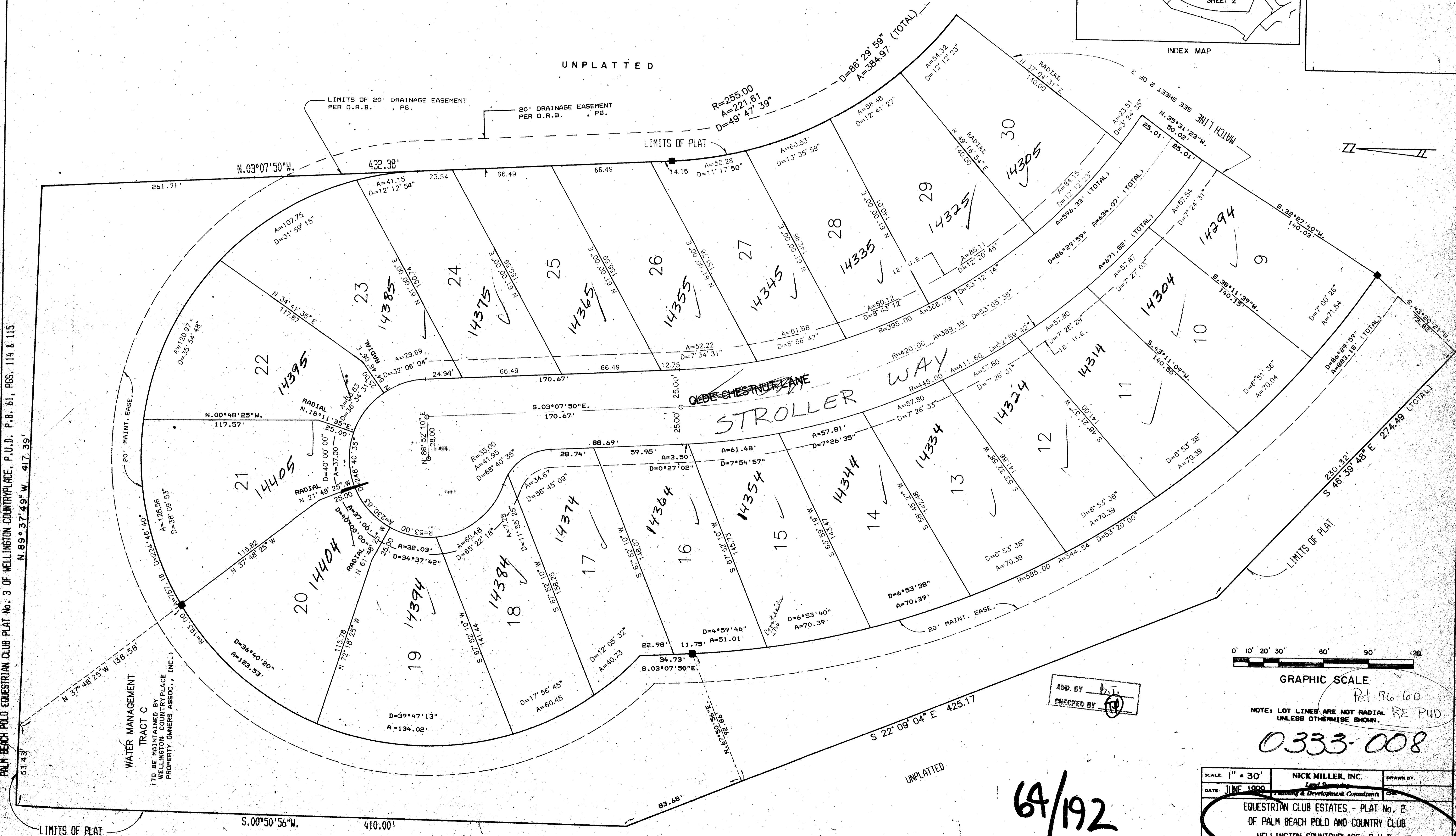
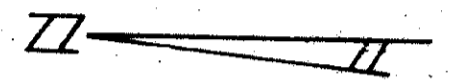
192



UNPLATTED

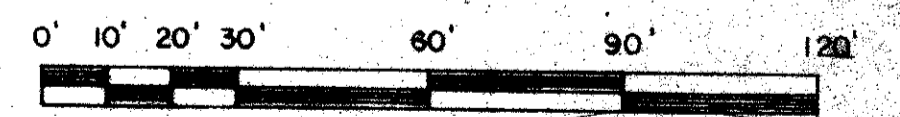
LIMITS OF 20' DRAINAGE EASEMENT PER O.R.B., PG.
20' DRAINAGE EASEMENT PER O.R.B., PG.

LIMITS OF PLAT



T&Z 72B

PALM BEACH POLO EQUESTRIAN CLUB PLAT NO. 3 OF WELLINGTON COUNTRYPLACE, P.U.D. P.B. 61, PGS. 114 & 115
N. 89° 37' 49" W. 417.39'



GRAPHIC SCALE
Pet. 76-60
RE PUD

0333-008

ADD. BY BJ
CHECKED BY [Signature]

64/192

SUBDIVISION # 402 OF PALM BEACH POLO
BOOK 04 PAGE 192
FLOOD ZONE (1) FLOOD MAP # 1008
QUAD # 78 ZONING ZB
SE 76-60 ZIP CODE 33414
PUD NAME WELLINGTON COUNTRYPLACE P.U.D.

SCALE: 1" = 30'	NICK MILLER, INC.	DRAWN BY:
DATE: JUNE 1989	Land Surveying Planning & Development Consultants	BY:
EQUESTRIAN CLUB ESTATES - PLAT NO. 2 OF PALM BEACH POLO AND COUNTRY CLUB WELLINGTON COUNTRYPLACE, P.U.D.		
2560 RCA Blvd. Suite 105 Palm Beach Gardens, Florida 33463		DRAWING NUMBER: 88063C